

Swahid Smriti Mahavidyalaya, Belsor, Nalbari, Assam.



Key Indicator

7.1 Institutional Values and Social Responsibilities

Metric No 7.1.7

The institution has disabled-friendly, barrier free environment, built environment with ramps/lift for easy access to classrooms. Disabled friendly wash-rooms, signage including tactile path, light, display board and signposts, assistive technology facilities for persons with disabilities accessible website, screen reading software, mechanized equipment, provision for enquiry and information: Human assistance, reader, scribe, soft copy of reading materials, screen reading.



[Signature]
Principal
Swahid Smriti Mahavidyalaya
Belsor : Nalbari (Assam)



Student's Notice Board & Ramp



Principal
Swahid Smriti Mahavidyalaya
Nalbari (Assam)



Fire Extinguisher



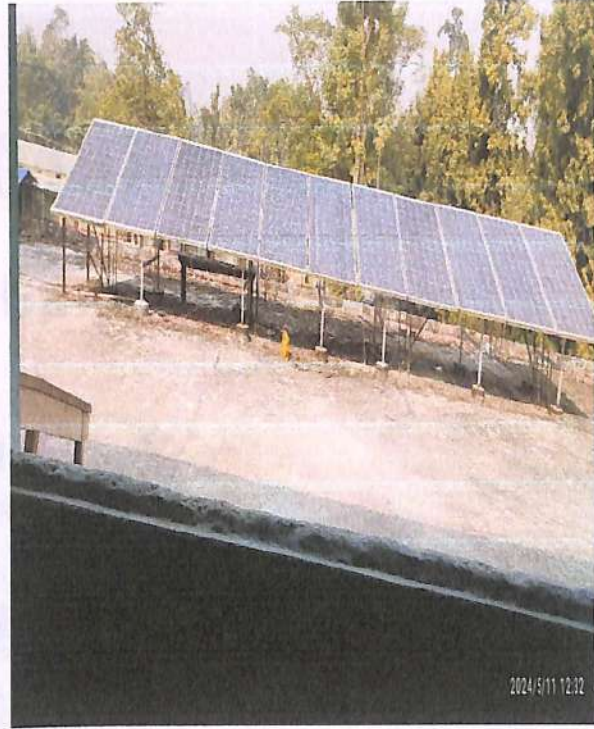
Anti-Ragging



Emergency Service Help Number



Principal
Principal
Swahid Smriti Mahavidyalaya
Belsor : Nalbari (Assam)



[Handwritten Signature]

Principal
Swahid Smriti Mahavidyalaya
Belsor : Nalbari (Assam)

Key Indicator
7.1 Institutional Values and Social Responsibility
Metric No 7.1.1
The institution efforts/initiatives in providing an inclusive, accessible, and best quality awards/cultural programs, targeted, relevant and resourceful and other diversity.